

1 FOUNDATION PLAN
Scale: 3/16"=1'-0"

SOIL BEARING CAPACITY NOTE

ASSUME BEARING CAPACITY OF SOIL 3000 PSF SLS OR 6000 PSF ULS TO BE CONFIRMED BY ENGINEER OR GEOTECHNICAL REPORT PRIOR TO POURING FOOTINGS.

SUBMITTAL REQUIREMENTS

PROVIDE THE FOLLOWING INFORMATION FOR REVIEW DURING CONSTRUCTION:
1. GEOTECHNICAL SUBGRADE INSPECTION REPORT AND REBAR INSPECTION REPORT, PERFORMED & STAMPED BY A LICENSED PROFESSIONAL ENGINEER.

GENERAL NOTES

- THE DESIGN AND CONSTRUCTION OF ALL WORK ON THIS PROJECT IS TO CONFORM TO THE ONTARIO BUILDING CODE OF CANADA - 2024 INCLUDING ALL AMENDMENTS, AND THE RELEVANT LISTED CSA STANDARDS INCLUDING THE LATEST REVISIONS.
- READ STRUCTURAL DRAWINGS IN CONJUNCTION WITH ALL RELEVANT ARCHITECTURAL AND SERVICES DRAWINGS AND OTHER CONTRACT DOCUMENTS.
- THE CONTRACTOR SHALL VERIFY ALL DIMENSIONED DRAWINGS AND REPORT ANY DISCREPANCIES TO THE ENGINEER BEFORE PROCEEDING WITH THE WORK.
- DO NOT EXCEED DESIGN LIVE LOAD DURING CONSTRUCTION.
- ALL WORK IS TO BE PERFORMED IN ACCORDANCE WITH THE ONTARIO OCCUPATIONAL HEALTH AND SAFETY ACT AND REGULATIONS FOR CONSTRUCTION PROJECTS.
- THE CONTRACTOR SHALL RETAIN AN INDEPENDENT INSPECTION AND TESTING COMPANY TO ENSURE THAT ALL WORK IS DONE IN ACCORDANCE WITH THE DRAWINGS AND SPECIFICATIONS. TESTING SHALL INCLUDE REINFORCING STEEL PLACEMENT, CONCRETE TESTS, SOIL BEARING AND COMPACTION TESTS, AND STRUCTURAL STEEL.
- IT IS THE RESPONSIBILITY OF BOTH THE OWNER AND THE CONTRACTOR TO NOTIFY THE ENGINEER OF REQUIRED INSPECTION AND TESTING. THE CONTRACTOR SHALL PROVIDE THE ENGINEER WITH A CONSTRUCTION SCHEDULE PRIOR TO STARTING THE WORK. GENERALLY, INSPECTION BY THE ENGINEER WILL BE REQUIRED FOR REBAR PRIOR TO CONCRETE PLACEMENT, FOOTING AND FOUNDATIONS PRIOR TO BACKFILLING, AND ABOVE GRADE FRAMING PRIOR TO INSTALLATION OF INTERIOR FINISHES.
- SITE VISITS AND REVIEWS BY THE DESIGN ENGINEER OR REPRESENTATIVE ARE INTENDED FOR THE PURPOSE OF ASCERTAINING GENERAL CONFORMANCE WITH THE DESIGN CONCEPT. THE SITE REVIEWS DO NOT MEAN THAT THE DESIGN ENGINEER HAS SEEN ALL OF THE CONSTRUCTION OR CONSTRUCTION PROCEDURES.
- REVIEW OF CONSTRUCTION BY THE DESIGN ENGINEER DOES NOT RELIEVE THE CONTRACTOR OF HIS RESPONSIBILITY FOR ERRORS AND OMISSIONS AND FOR MEETING ALL THE REQUIREMENTS OF THE CONSTRUCTION AND CONTRACT DOCUMENTS.
- THE CONTRACTOR IS RESPONSIBLE FOR ANY COSTS ASSOCIATED WITH THE REMOVAL OF FINISHES REQUIRED FOR INSPECTIONS OR TESTING THAT IS COVERED BEFORE INSPECTIONS ARE COMPLETED.
- SUBSTITUTIONS FROM SPECIFIED PRODUCTS AND MATERIALS MUST BE APPROVED BY THE ENGINEER PRIOR TO ORDERING OF MATERIALS. THE CONTRACTOR SHALL REIMBURSE ALL CONSULTANT FOR ADDITIONAL COSTS INCURRED AS A RESULT OF REVIEWING ANY CHANGES MADE TO THE CONTRACT DOCUMENTS.
- IT IS THE SOLE RESPONSIBILITY OF THE CONTRACTOR TO DESIGN ALL SHORING AND TEMPORARY BRACING PER ALBERTA OCCUPATIONAL HEALTH AND SAFETY REGULATION AND THE CONTRACTOR SHALL RETAIN AN ENGINEER AS REQUIRED.

FOUNDATION NOTES

- ALL FOOTINGS SHALL BE FOUNDED ON NATURALLY CONSOLIDATED UNDISTURBED SOIL CAPABLE OF SUSTAINING A LOAD (SEE PLAN) AT LEAST 2'-6" (750mm) BELOW ORIGINAL (NOT FLL) GRADE.
- FOOTING ELEVATIONS ARE BASED ON ESTIMATE ONLY. IF UPON EXCAVATING TO THE SPECIFIED ELEVATIONS IT IS FOUND THAT THE ABOVE CONDITIONS ARE NOT MET OR THAT THEY HAVE BEEN MET AT HIGHER ELEVATIONS, THE FOOTING ELEVATION MAY BE ADJUSTED WITH THE ENGINEER'S PERMISSION.
- MINIMUM DEPTH FOR EXTERIOR FOOTINGS IS 1200 (1200mm) BELOW FINISHED GRADE.
- CENTER ALL CAPS AND FOOTINGS UNDER COLUMNS EXCEPT AS NOTED OTHERWISE ON THE PLANS.
- DURING COLD WEATHER, PROTECT SOIL BENEATH AND ADJACENT TO FOOTINGS FROM FREEZING. DO NOT CAST FOUNDATION ON FROZEN MATERIAL.
- CONTRACTOR IS RESPONSIBLE FOR MANAGING SURFACE & GROUND WATER DURING CONSTRUCTION AND TO ENSURE FOUNDATIONS ARE CAST ON DRY UNDISTURBED SOIL.
- UNLESS SPECIFIED BY THE ENGINEER, DO NOT EXCEED A RISE OF 7" (175mm) IN A RUN OF 10' (250mm) IN THE LINE OF SLOPE BETWEEN ADJACENT FOOTINGS EXCAVATIONS OR ALONG STEPPED FOOTINGS. USE STEPS NOT EXCEEDING 24" (600mm) IN HEIGHT AND NOT LESS THAN 48" (1200mm) IN LENGTH.
- WHERE NECESSARY, THE CONTRACTOR SHALL LOWER FOOTINGS TO ACCOMMODATE DRAIN LINES, ETC.
- DO NOT PLACE BACKFILL AGAINST WALLS RETAINING EARTH (UNLESS DESIGNED FOR CANTILEVER) UNTIL FLOOR CONSTRUCTION AT TOP AND BOTTOM OF THE WALLS IS POURED AND SET.
- BACKFILLING AGAINST FOUNDATION WALLS TO BE DONE SO THAT THERE IS NEVER MORE THAN 1'-6" (450mm) DIFFERENCE IN LEVEL, ONE SIDE TO THE OTHER, EXCEPT AS NOTED IN PARAGRAPH 9, ABOVE.
- WHERE SLAB ON GRADE IS USED TO TIE THE TOP OF THE WALL RETAINING EARTH, ADEQUATE SHORING AND BRACING MUST BE PROVIDED WHILE FILL IS BEING PLACED AND COMPACTED, AND MUST BE LEFT IN PLACE UNTIL SLAB IS POURED AND GAINED 75% OF ITS ULTIMATE STRENGTH.
- ANCHOR ALL CONCRETE BLOCK FOUNDATION WALLS TO CONCRETE PIERS WITH 2-10Mx1200 (1200mm) EVERY SECOND BLOCK COURSE. CAVITIES WITH BARS SHALL BE FILLED SOLID WITH GROUT.
- ALL WALL FOOTING 4" (100mm) PROJECTION AND 8" (200mm) DEPTH UNLESS NOTED OTHERWISE ON PLANS.

STRUCTURAL STEEL NOTES

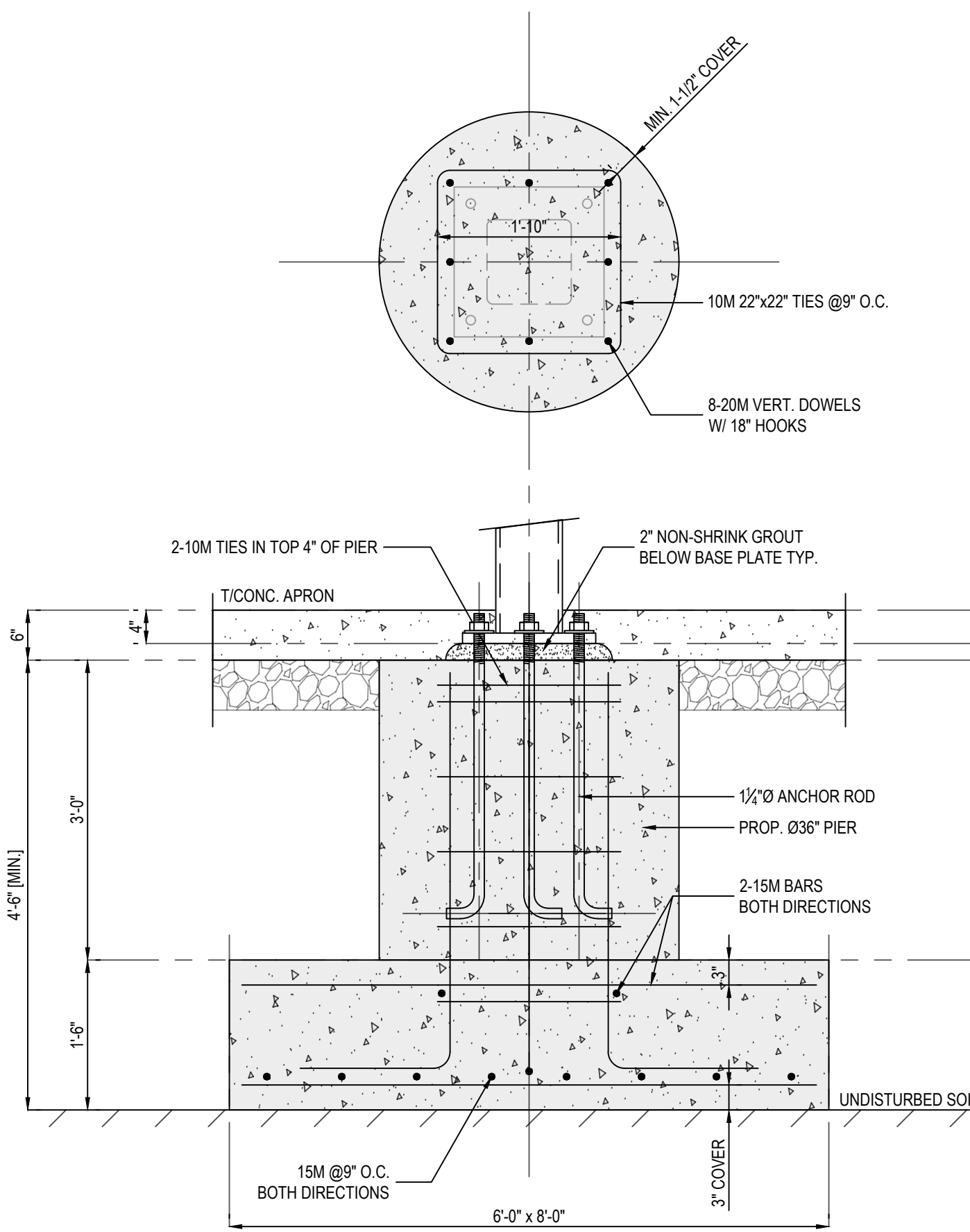
- CONFORM TO THE REQUIREMENTS ON CAN/CSA S16-19.
- GENERAL REQUIREMENTS FOR ROLLED OR WELDED STRUCTURAL QUALITY STEEL / STRUCTURAL QUALITY STEEL:
 - STRUCTURAL WIDE FLANGE AND WELDED WIDE FLANGE SHAPES TO CONFORM TO CAN/CSA-G40.20/G40.21, GRADE 350W.
 - ANGLES, CHANNELS, PLATES, AND RODS TO CONFORM TO CAN/CSA-G40.20/G40.21, GRADE 300W.
 - HOLLOW STRUCTURAL SECTIONS TO CONFORM TO CAN/CSA-G40.20/G40.21, GRADE 350W, CLASS H.
 - PIPE SECTIONS TO CONFORM TO ASTM A53, GRADE B.
 - ANCHOR RODS TO CONFORM TO G40.21-300W.
 - STRUCTURAL BOLTS AND NUTS TO CONFORM TO ASTM A325M, WASHERS TO CONFORM TO ASTM F436M.
 - HEADED STUDS TO CONFORM TO ASTM A108.
- CISC CANADIAN INSTITUTE OF STEEL CONSTRUCTION HANDBOOK OF STEEL CONSTRUCTION, 11TH EDITION
- CODE OF STANDARD PRACTICE FOR STRUCTURAL STEEL
- W47.1-09 (R2014) CERTIFICATION OF COMPANIES FOR FUSION WELDING OF STEEL
- CSA W59-1:13 WELDED STEEL CONSTRUCTION (METAL ARC WELDING), ELECTRODES TO BE E48XX.

CONCRETE NOTES

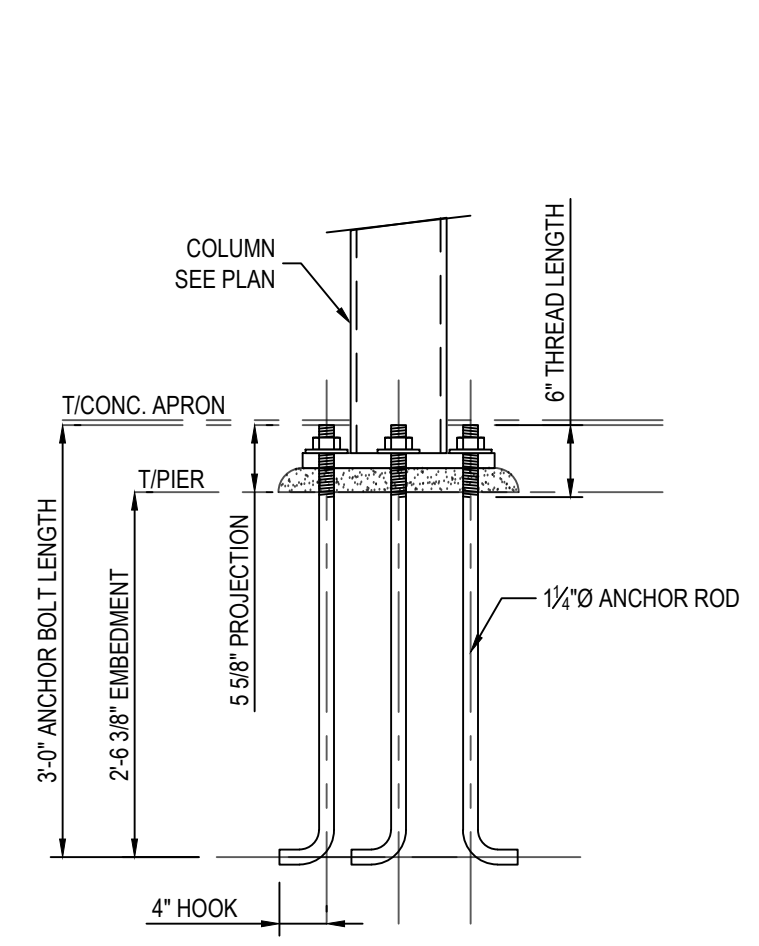
- ALL CONCRETE WORK TO CONFORM TO CSA STANDARDS A23.1-14, A23.2-14, & A23.3-14
- CONCRETE FLOOR AND FOUNDATIONS SHALL HAVE A MINIMUM COMPRESSIVE STRENGTH OF 25 MPa AT 28 DAYS UNLESS NOTED OTHERWISE ON PLANS.
- ALL REINFORCING STEEL SHALL CONFORM TO CSA SPECIFICATION G30.18-M92 GRADE 400. FOR CONCRETE PROTECTION TO BARS SEE PLAN.
 - SPACING AND CONCRETE COVER FOR REINFORCING STEEL SHALL CONFORM TO CSA A23.1 & CSA A23.2 UNLESS NOTED OTHERWISE:
 - CONCRETE CAST AGAINST EARTH: 3" (76mm)
 - PIERS AND WALL: 1 1/2" (38mm)
 - EXPOSED TO DE-ICING CHEMICALS: 2 1/2" (64mm)
 - INTERIOR SLABS AND BEAMS: 1 1/2" (38mm)
- CONCRETE PROPERTIES:
 - ALL CONCRETE SHALL HAVE A 28 DAY COMPRESSIVE STRENGTH OF 25MPa MINIMUM UNLESS OTHERWISE SPECIFIED.
 - EXTERIOR CONCRETE SLABS TO BE CLASS C-2 CONCRETE (28 DAY COMPRESSIVE STRENGTH OF 32MPa) WITH AIR ENTRAINMENT.
 - INTERIOR CONCRETE SLABS SHALL HAVE A 28 DAY COMPRESSIVE STRENGTH OF 25MPa, 0.55 MAX. WATER-CEMENT RATIO.
 - CONCRETE MIX DESIGN SHALL BE SUBMITTED TO THE ENGINEER FOR APPROVAL PRIOR TO USE AT JOB SITE.
- LAP ALL REINFORCING BARS AT LEAST 20 DIAMETERS OR MINIMUM OF 1'-0" (300mm) UNLESS NOTED OTHERWISE ON ALL PLANS.
- SLUMP OF CONCRETE TO BE 3" ± 1" (76mm ± 25mm) OR AS OTHERWISE SPECIFIED. CONCRETE WITH 4% (110mm) SLUMP OR MORE IS TO BE REJECTED.
- ALL OPENINGS IN CONCRETE SLAB OR WALLS SHALL BE TRIMMED WITH 2-15M BARS, HEAD, JAMBS, AND SILL. ALSO SEE DETAILS.
- ALL PRECAST CONCRETE SLAB DESIGN, FABRICATION AND ERECTION TO BE IN ACCORDANCE WITH CSA A23.4-16.
- INSTALL ANCHOR BOLTS OR MISCELLANEOUS ITEMS SUPPLIED BY OTHERS FOR INSTALLATION IN THE CONCRETE WORK.
- CONTROL JOINTS: IN CONCRETE SLABS ON GRADE, MAXIMUM SPACING 25'-0" (7500mm) AREAS NOT TO EXCEED 625' IN FOUNDATION WALLS MORE THAN 62'-0" (25m) LONG AT INTERVALS NOT TO EXCEED 49'-0" (15m).

CANOPY STEEL DECK NOTES

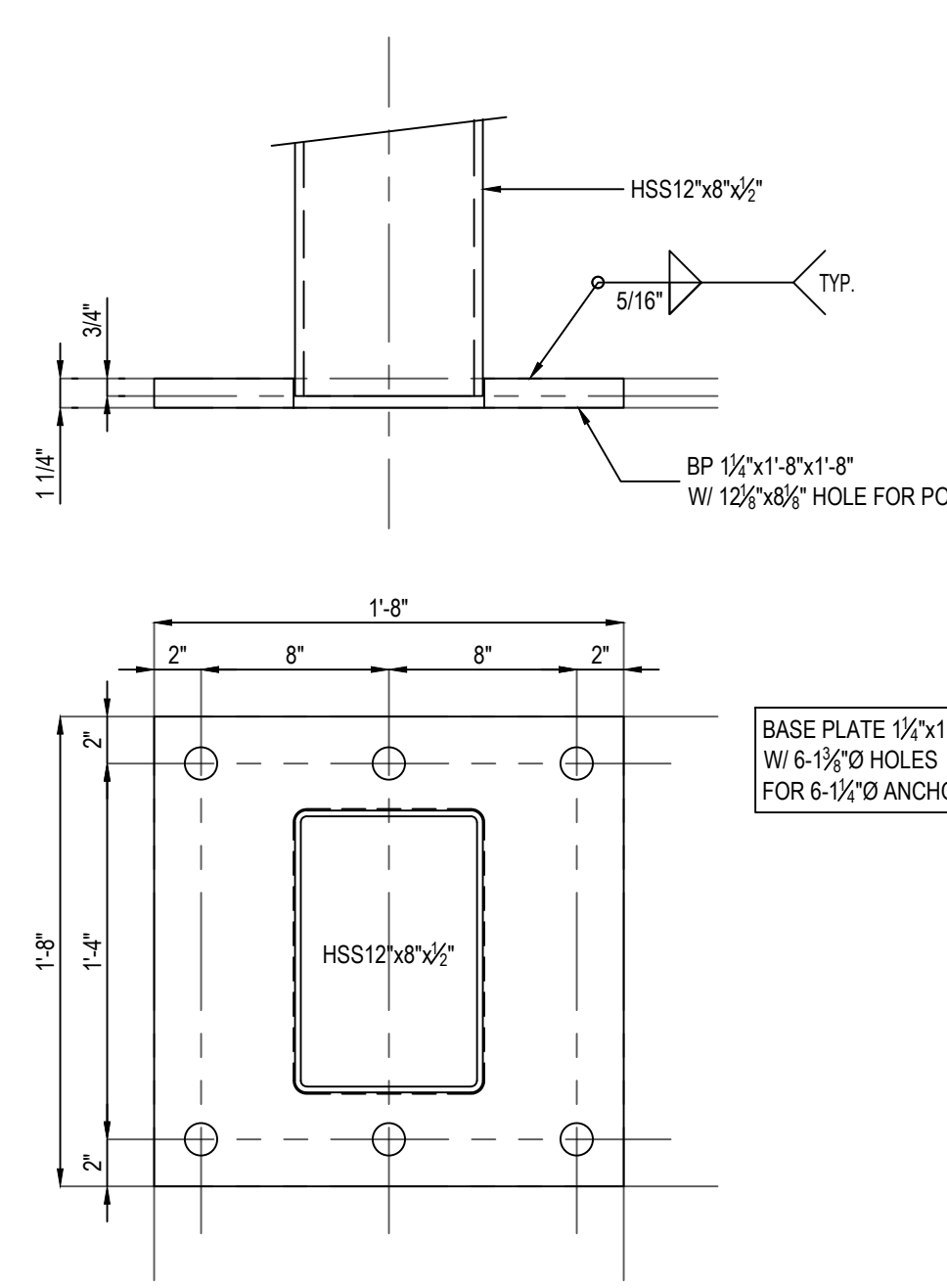
- GUTTERS & DOWNSPOUTS ARE DESIGNED BY OTHERS. STRUCTURAL DESIGN ASSUMED NO WATER STORAGE ON CANOPY.
- STANDING SEAM ROOF DECK SHALL BE P16 3/16"-20ga STEEL PANELS BY METALWORKS OR APPROVED EQUIVALENT.
- STANDING SEAM ROOF DECK SHALL HAVE A MINIMUM OF 3 SPANS AND SHALL BE CONNECTED TO STRUCTURAL STEEL BY 12ga PANEL CLIPS BY METALWORKS AT 16" O.C.
- MAXIMUM SLS LOAD CAPACITY OF THE 12ga PANEL CLIP BY METALWORKS IS 1.2 KIP AS PER CERRY & VEY ENGINEERS INC. ENGINEERING REPORT NO. 23215 - DATED JULY 14, 2003. PROVIDE SUFFICIENT NUMBER OF PANEL CLIPS AS TO NOT EXCEED THE ABOVE LOAD CAPACITY.



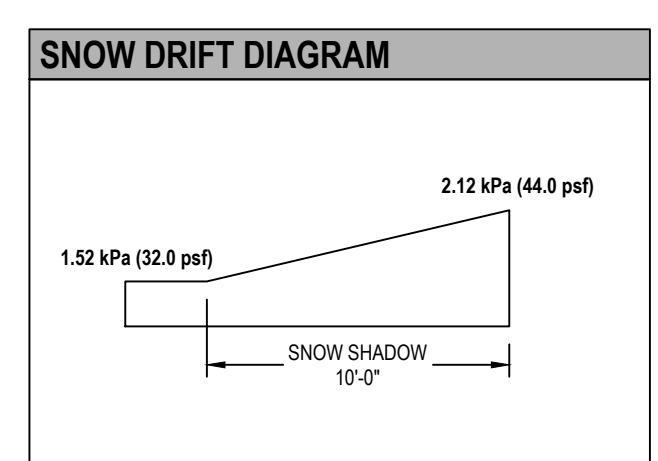
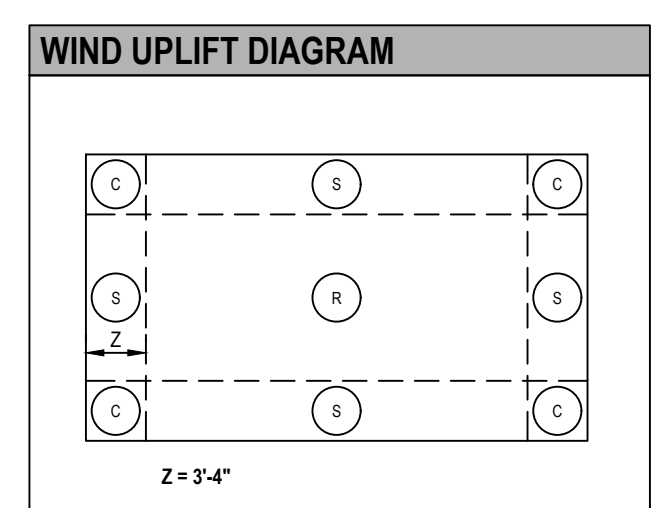
2 FOUNDATION DETAIL
Scale: 3/4"=1'-0"



3 ANCHOR ROD DETAIL
Scale: 3/4"=1'-0"



4 BASE PLATE DETAIL
Scale: 1-1/2"=1'-0"



DESIGN INFORMATION

KEY MAP

THESE DESIGN DOCUMENTS ARE PREPARED SOLELY FOR THE USE BY THE PARTY WITH WHOM THE DESIGN PROFESSIONAL HAS ENTERED INTO A CONTRACT AND THERE ARE NO REPRESENTATIONS OF ANY KIND MADE BY THE DESIGN PROFESSIONAL TO ANY PARTY WITH WHOM THE DESIGN PROFESSIONAL HAS NOT ENTERED INTO A CONTRACT.

DO NOT SCALE DRAWINGS. THE CONTRACTOR SHALL CHECK AND VERIFY ALL DIMENSIONS AND REPORT ANY ERRORS AND OMISSIONS TO THE ENGINEER. THIS DRAWING IS NOT TO BE USED FOR CONSTRUCTION UNLESS MARKED AS 'ISSUED FOR CONSTRUCTION', CERTIFIED AND DATED.

REV.	DATE	REMARKS
0	04MAR26	ISSUED PRELIM.

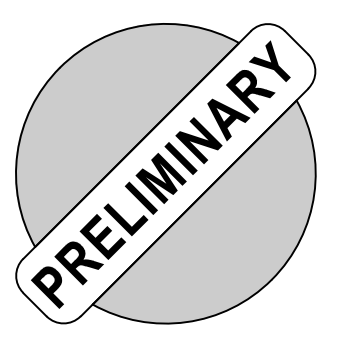
ZOLTAN ENGINEERING
25-4380 SOUTH SERVICE ROAD
BURLINGTON, ON L7L 5Y6
(905) 331-8307
WWW.ZOLTANENGINEERING.COM

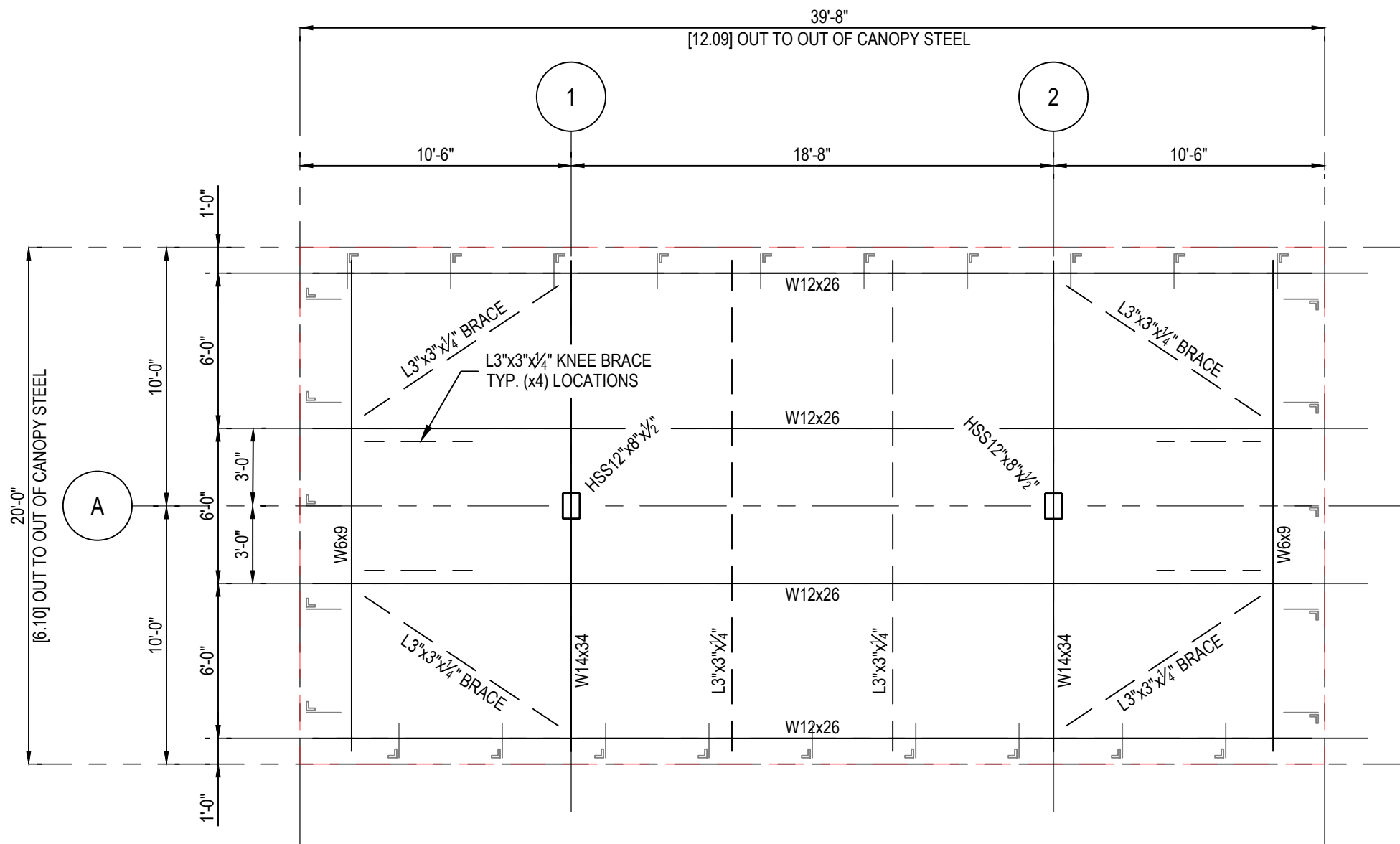
PROJECT TITLE
GAS STATION CANOPY
WAINFLEET, ON

DRAWING TITLE
ANCHOR BOLT LAYOUT,
& BASE PLATE DETAIL

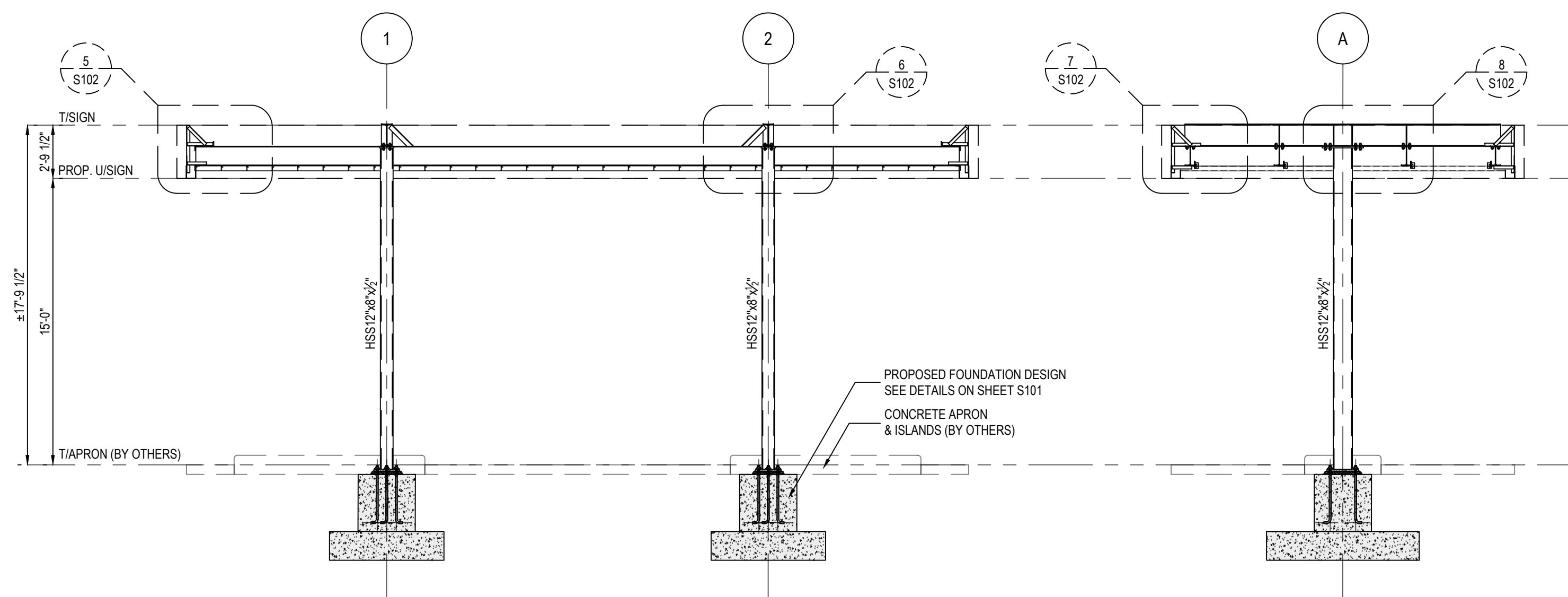
SCALE	AS NOTED
DATE	04MAR26
DRAWN	TV
DESIGNED	ZL
CHECKED	ZL

PROJECT NO. 26-703 SHEET NO. S101

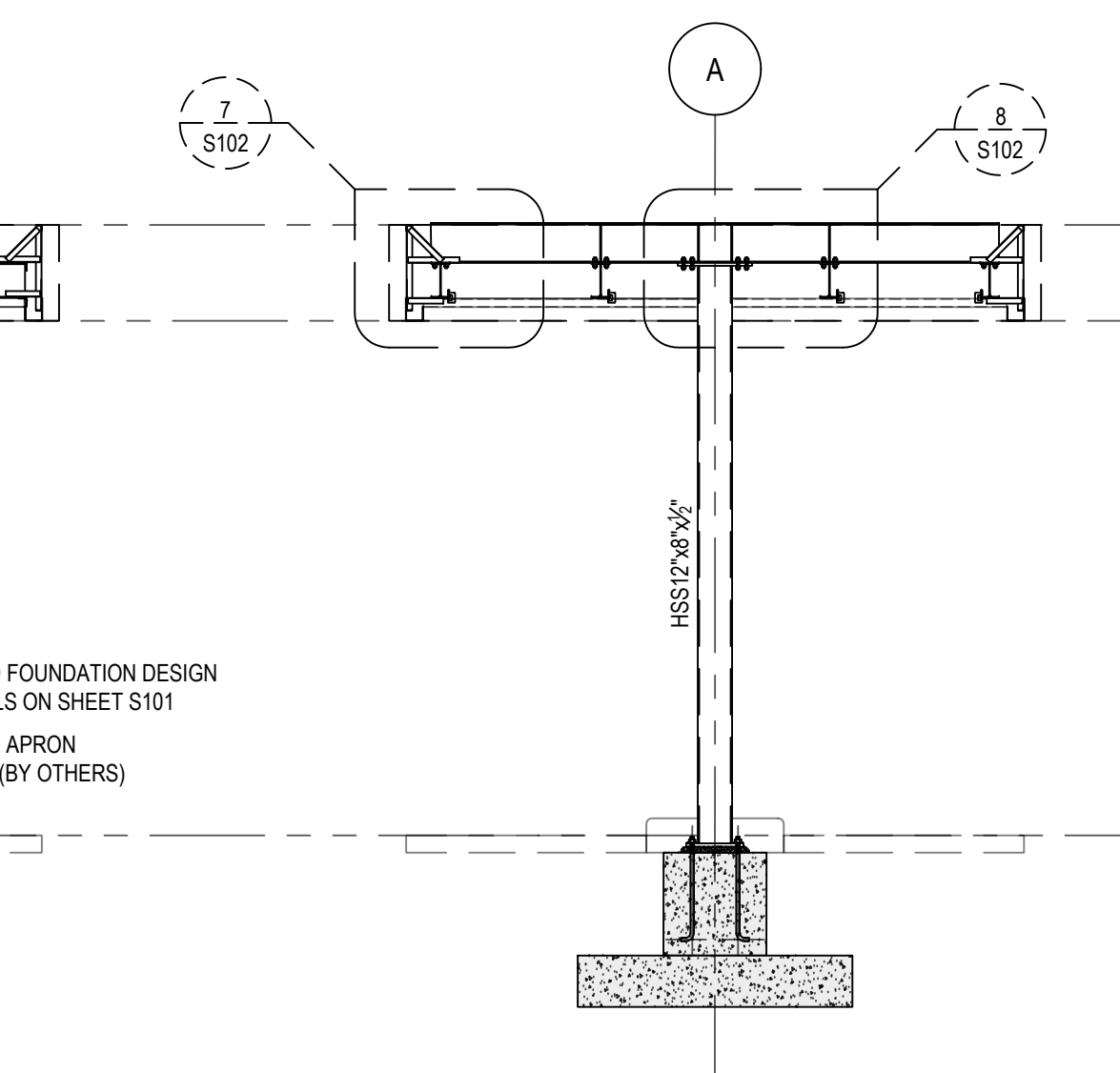




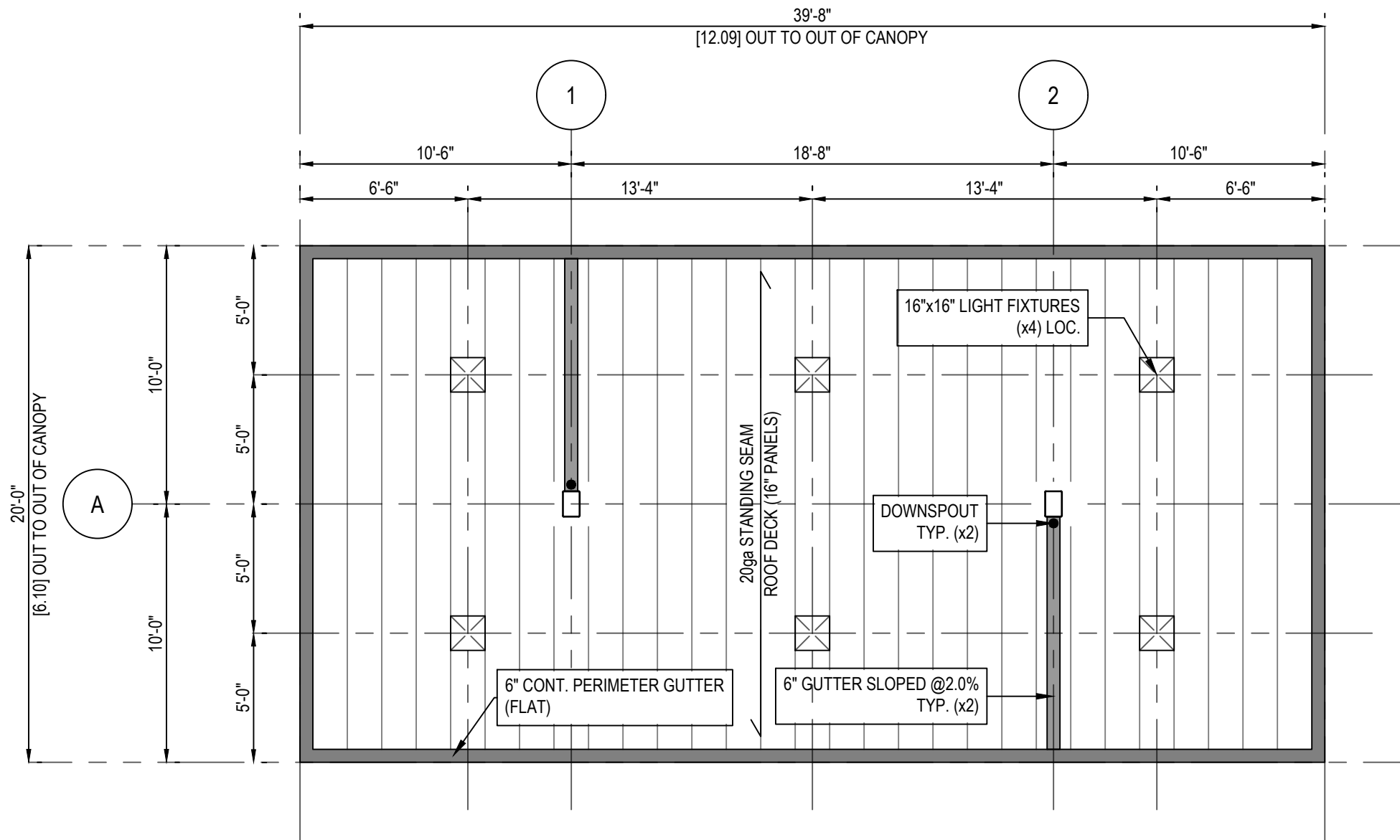
1 FRAMING PLAN
Scale: 3/16"=1'-0"



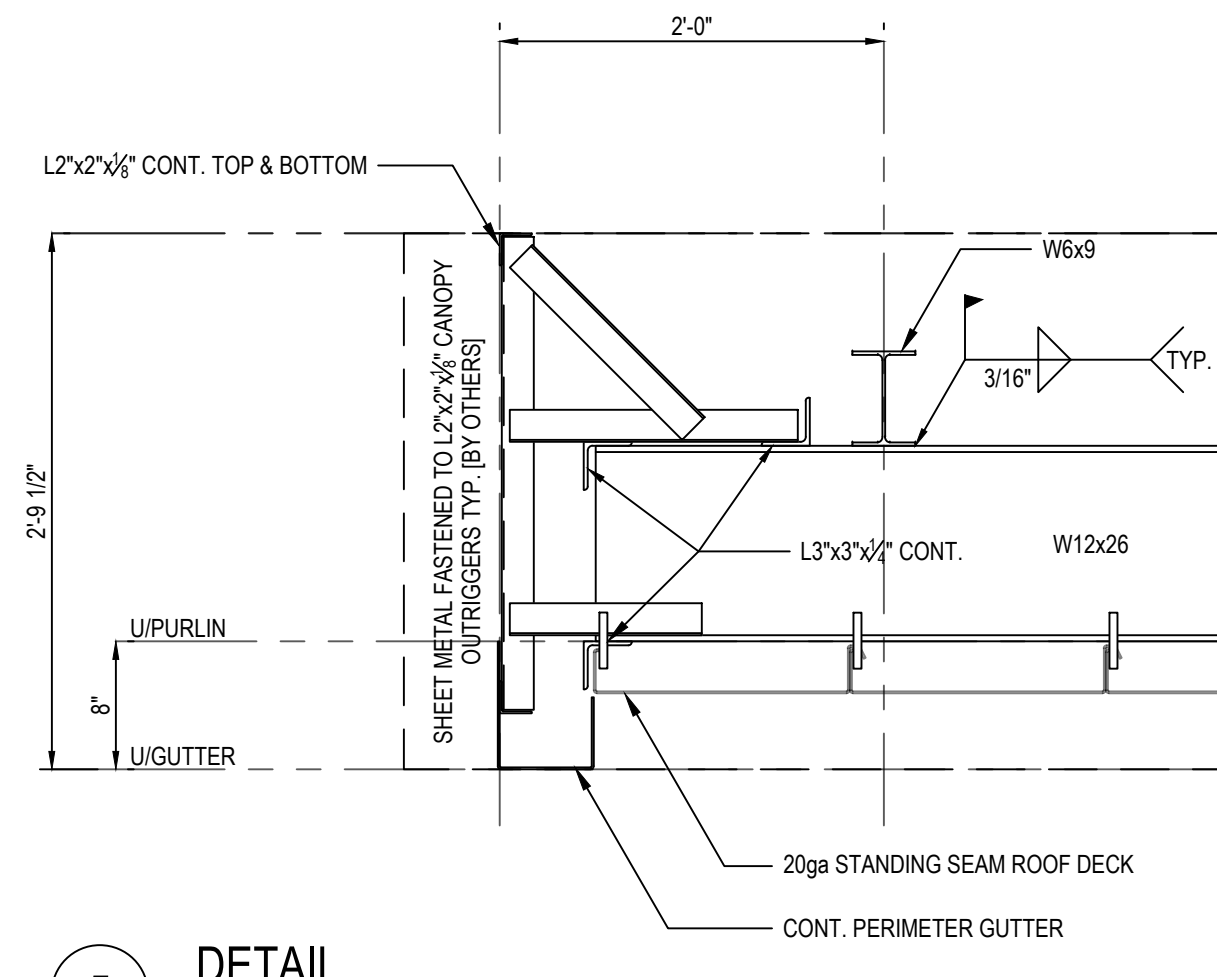
3 CROSS SECTION @ GRIDLINE A
Scale: 3/16"=1'-0"



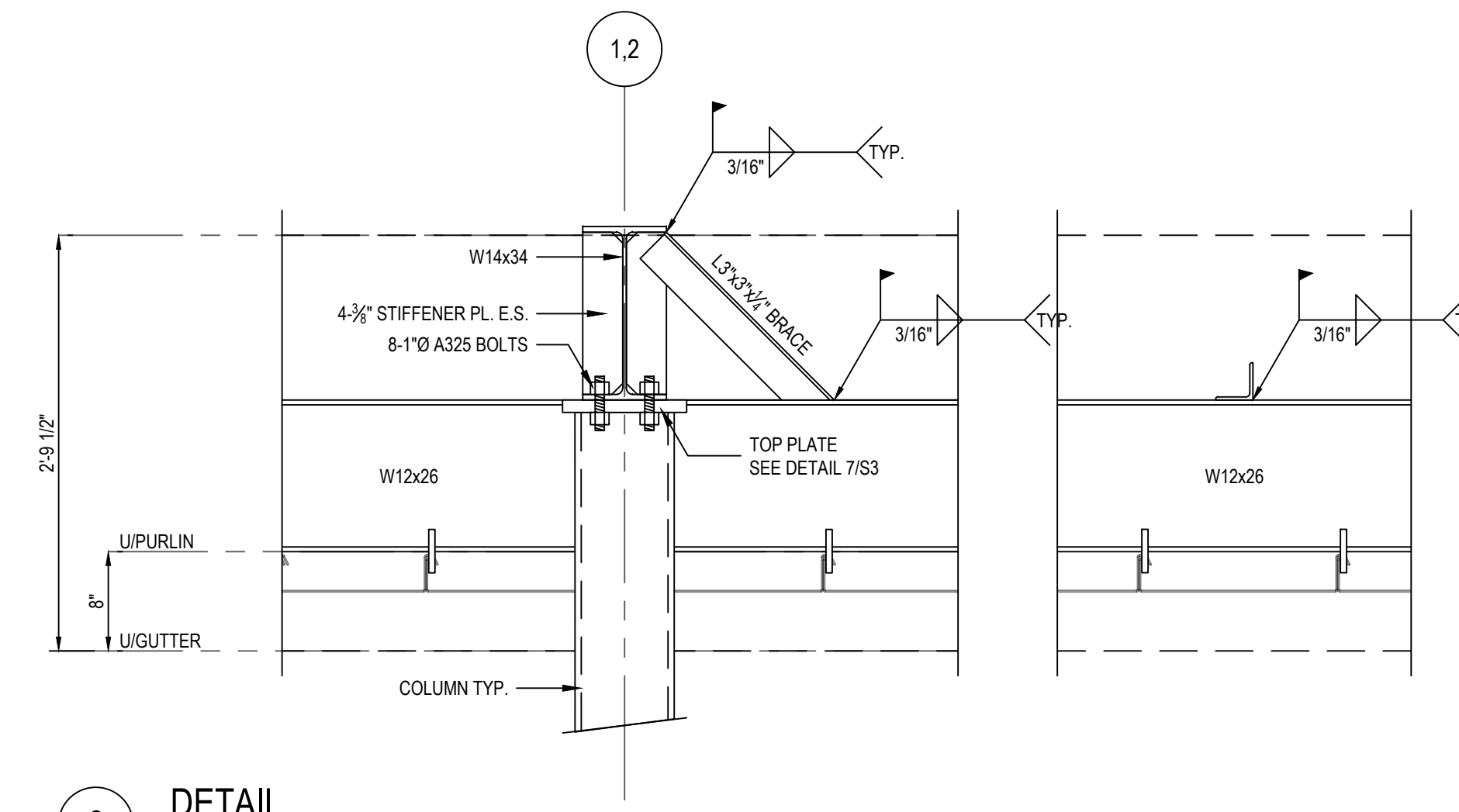
4 CROSS SECTION @ GRIDLINE 1
Scale: 3/16"=1'-0"



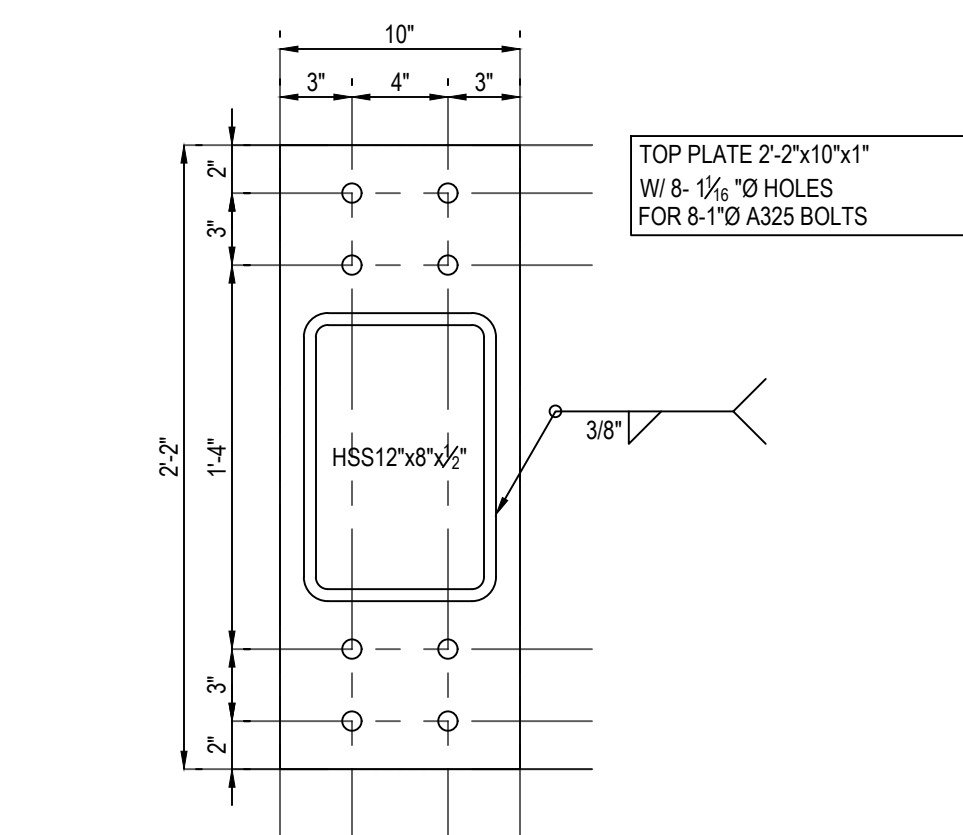
2 DECKING LAYOUT
Scale: 3/16"=1'-0"



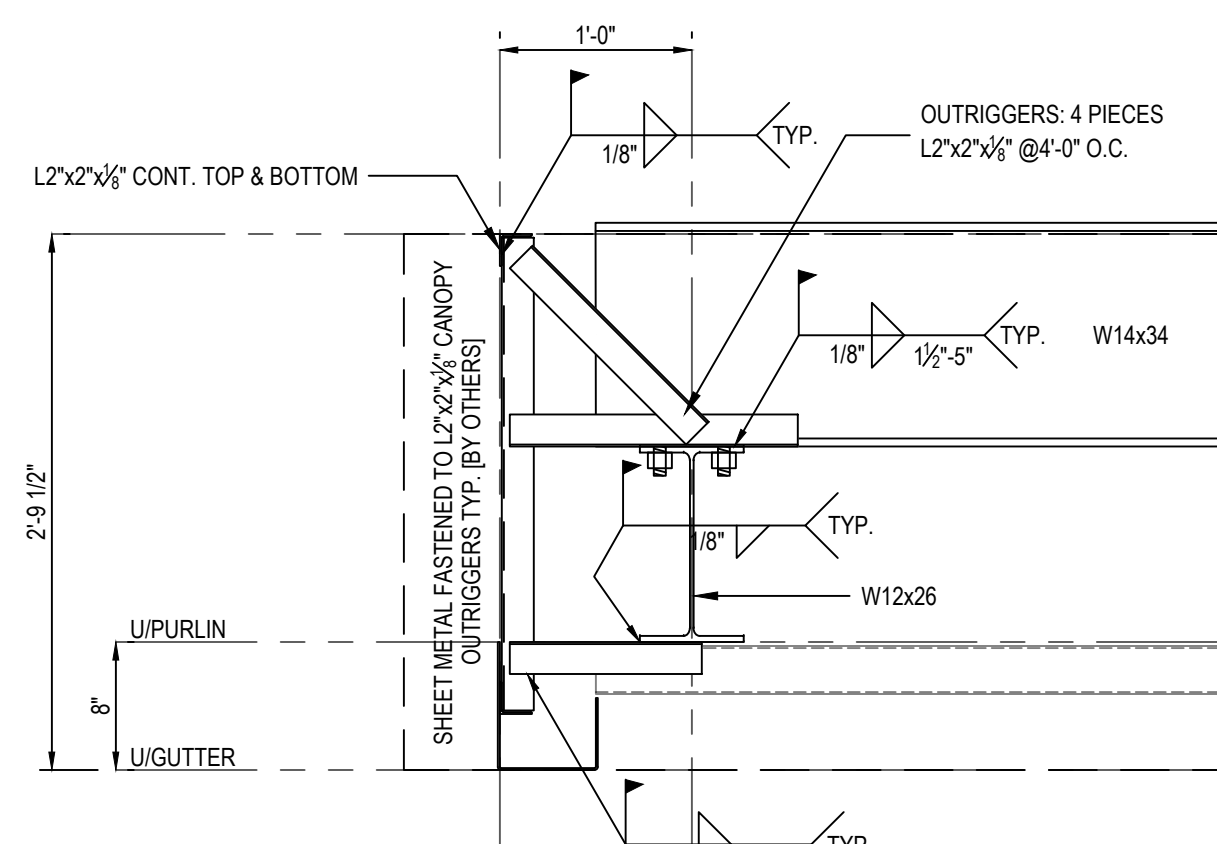
5 DETAIL
Scale: 1"=1'-0"



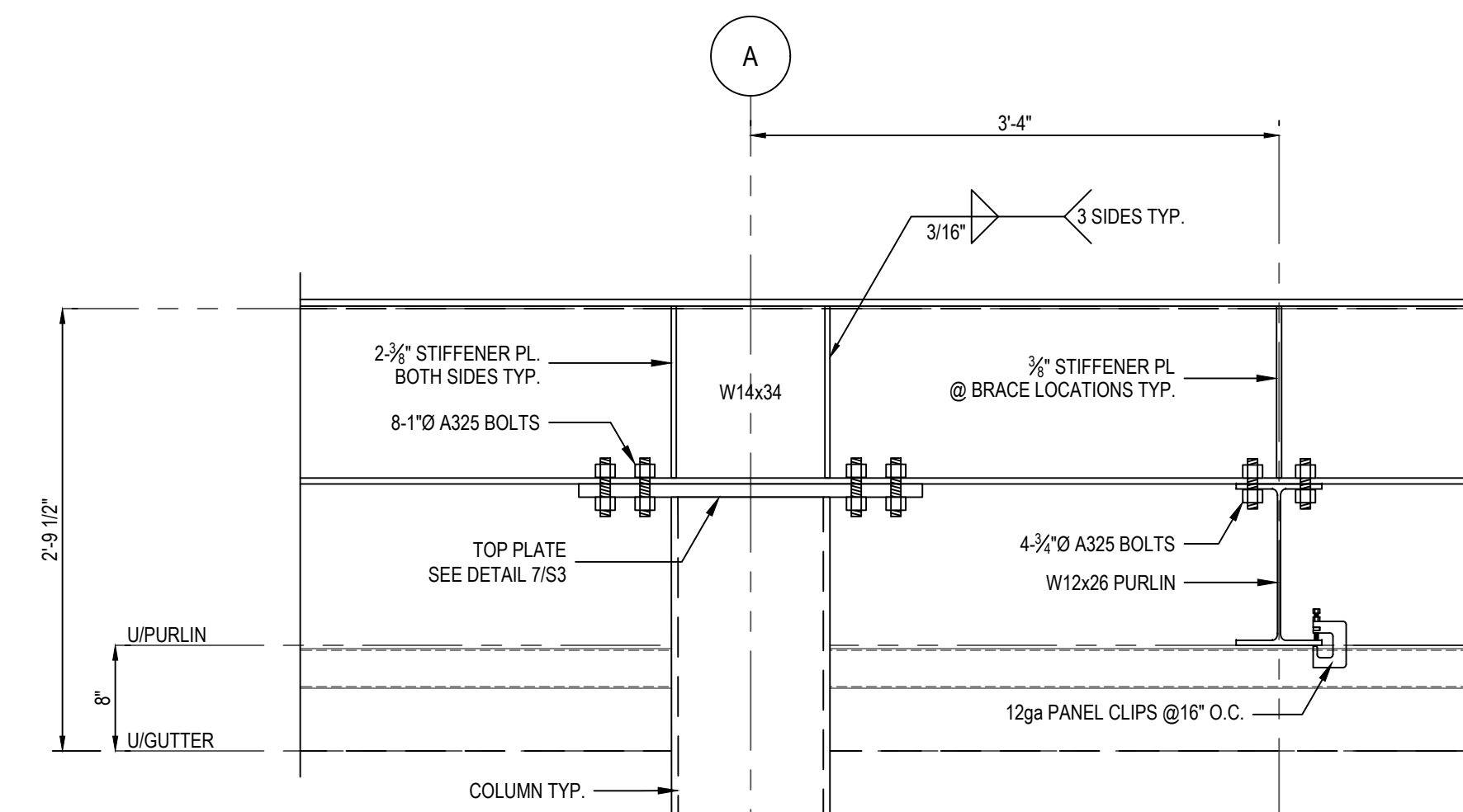
6 DETAIL
Scale: 1"=1'-0"



9 TOP PLATE DETAIL
Scale: 1 1/2"=1'-0"



7 DETAIL
Scale: 1"=1'-0"



8 DETAIL
Scale: 1"=1'-0"

KEY MAP

THESE DESIGN DOCUMENTS ARE PREPARED SOLELY FOR THE USE BY THE PARTY WITH WHOM THE DESIGN PROFESSIONAL HAS ENTERED INTO A CONTRACT AND THERE ARE NO REPRESENTATIONS OF ANY KIND MADE BY THE DESIGN PROFESSIONAL TO ANY PARTY WITH WHOM THE DESIGN PROFESSIONAL HAS NOT ENTERED INTO A CONTRACT.

DO NOT SCALE DRAWINGS. THE CONTRACTOR SHALL CHECK AND VERIFY ALL DIMENSIONS AND REPORT ANY ERRORS AND OMISSIONS TO THE ENGINEER. THIS DRAWING IS NOT TO BE USED FOR CONSTRUCTION UNLESS MARKED AS 'ISSUED FOR CONSTRUCTION', CERTIFIED AND DATED.

REV.	DATE	ISSUED PRELIM.	REMARKS
0	04MAR26	ISSUED PRELIM.	

ZOLTAN ENGINEERING
 25-4380 SOUTH SERVICE ROAD
 BURLINGTON, ON L7L 5Y6
 (905) 331-8307
 WWW.ZOLTANENGINEERING.COM

PROJECT TITLE
 GAS STATION CANOPY
 WAINFLEET, ON

DRAWING TITLE
 FRAMING PLAN
 & DECKING LAYOUT

SCALE	AS NOTED
DATE	04MAR26
DRAWN	TV
DESIGNED	ZL
CHECKED	ZL

PROJECT NO. 26-703 SHEET NO. S102

