

BEARING NOTE
 BEARINGS ARE UTM GRID, DERIVED FROM OBSERVED REFERENCE POINTS A AND B BY REAL TIME NETWORK (RTN) OBSERVATIONS, UTM ZONE 17, NAD83 (CSRS) (2010)
 FOR BEARING COMPARISONS, A ROTATION OF 1°06'00" COUNTERCLOCKWISE WAS APPLIED TO BEARINGS ON P1, P2.

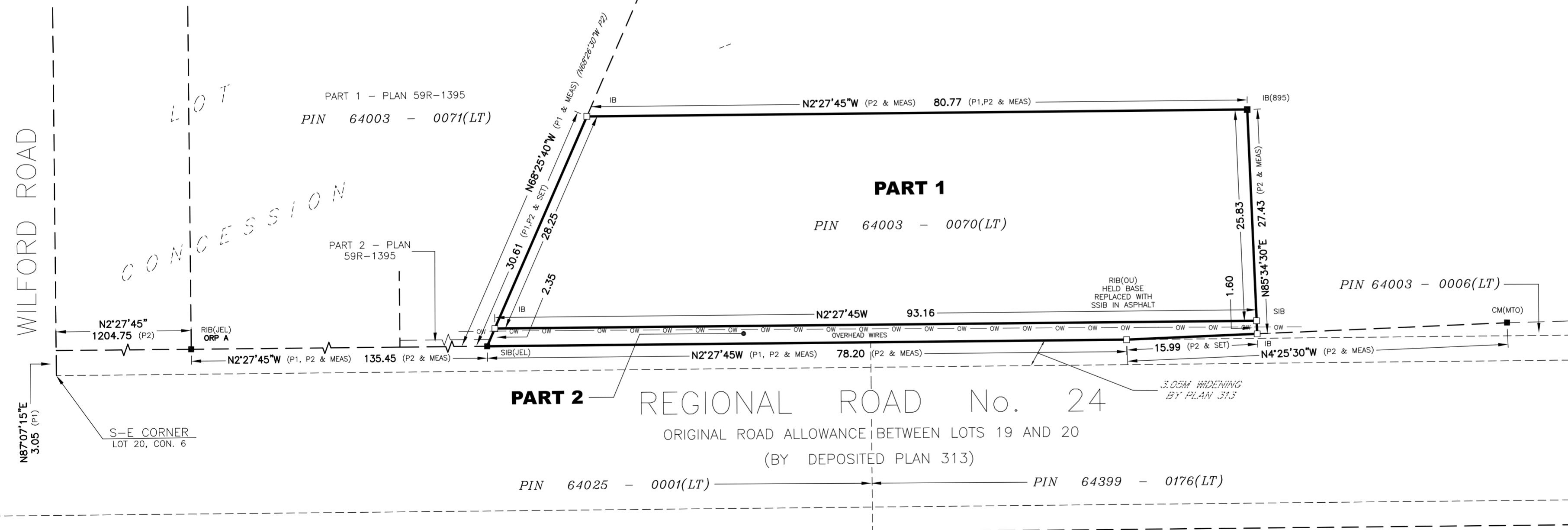
DISTANCE NOTE
 DISTANCES ARE GROUND AND CAN BE CONVERTED TO GRID BY MULTIPLYING BY THE COMBINED SCALE FACTOR OF 0.9997928.

OBSERVED REFERENCE POINTS (ORPs): UTM ZONE 17, NAD 83 (CSRS) (2010).
 CO-ORDINATES TO URBAN ACCURACY PER SEC. 14 (2) OF O.REG. 216/10

| POINT ID | NORTHING | EASTING |
|----------|------------|-----------|
| ORP A | 4759196.23 | 632242.43 |
| ORP B | 4759448.97 | 631939.63 |

CO-ORDINATES CANNOT, IN THEMSELVES, BE USED TO RE-ESTABLISH CORNERS OR BOUNDARIES SHOWN ON THIS PLAN.

| SCHEDULE | | | |
|----------|----------------|--------------|---------------------------|
| PART | LOT | CONCESSION | PIN |
| 1 | PART OF LOT 20 | CONCESSION 6 | ALL OF PIN 64003-0070(LT) |
| 2 | | | |



PLAN OF SURVEY OF
 PART LOT 20
 CONCESSION 6
TOWNSHIP OF WAINFLEET
 REGIONAL MUNICIPALITY OF NIAGARA
 SCALE 1 : 400

DONALD G. CHAMBERS-ONTARIO LAND SURVEYOR
 THE INTENDED PLOT SIZE OF THIS PLAN IS 645mm IN WIDTH BY 356mm IN HEIGHT WHEN PLOTTED AT A SCALE OF 1:400

LEGEND

| | | |
|---------|---------|---|
| —■— | DENOTES | SURVEY MONUMENT FOUND |
| —□— | " | SURVEY MONUMENT SET |
| SIB | " | STANDARD IRON BAR |
| SSIB | " | SHORT STANDARD IRON BAR |
| IB | " | IRON BAR |
| RIB | " | ROUND IRON BAR |
| CM | " | CONCRETE MONUMENT |
| MEAS | " | MEASURED |
| OU | " | ORIGIN UNKNOWN |
| N/S/E/W | " | NORTH/SOUTH/EAST/WEST |
| PIN | " | PROPERTY IDENTIFICATION NUMBER |
| P1 | " | PLAN 59R-1395 |
| P2 | " | PLAN OF SURVEY BY D. A. LANE, O.L.S DATED DECEMBER 14, 1970 |
| MTO | " | MINISTRY OF TRANSPORTATION OF ONTARIO |
| JEL | " | J. E. LANTHIER, O.L.S |
| 895 | " | D. A. LANE, O.L.S |

SURVEYOR'S CERTIFICATE
 I CERTIFY THAT:
 1) THIS SURVEY AND PLAN ARE CORRECT AND IN ACCORDANCE WITH THE SURVEYS ACT, THE SURVEYORS ACT AND THE LAND TITLES ACT AND THE REGULATIONS MADE UNDER THEM;
 2) THE SURVEY WAS COMPLETED ON THE 10th DAY OF MARCH, 2026.
 MARCH 10, 2026
 DATE DONALD G. CHAMBERS, B. Sc., O.L.S.

THIS PLAN OF SURVEY RELATES TO A.O.L.S. PLAN SUBMISSION FORM V-125667

CHAMBERS AND ASSOCIATES SURVEYING LTD

12 THOROLD ROAD EAST
 WELLAND ONTARIO L3C 3T2
 (905) 735-7841
 (905) 735-7844
 www.casl-surveying.com

| | | | |
|-----------------|-----------------|---------------|----------------|
| DRAWN BY: A.M.L | MSCAD: 26006_MS | DWG: 26006_RP | FILE No: 26-06 |
|-----------------|-----------------|---------------|----------------|

METRIC NOTE
 DISTANCES AND COORDINATES SHOWN ON THIS PLAN ARE IN METRES AND CAN BE CONVERTED TO FEET BY DIVIDING BY 0.3048.